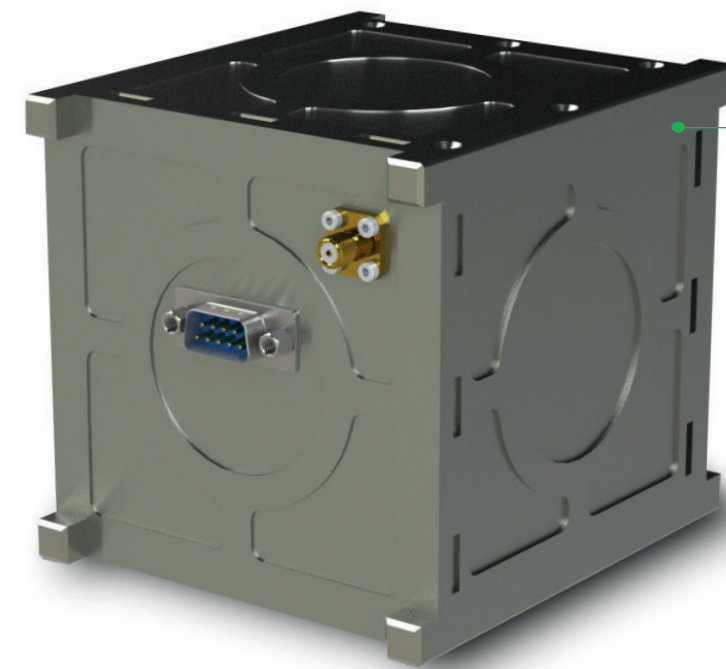
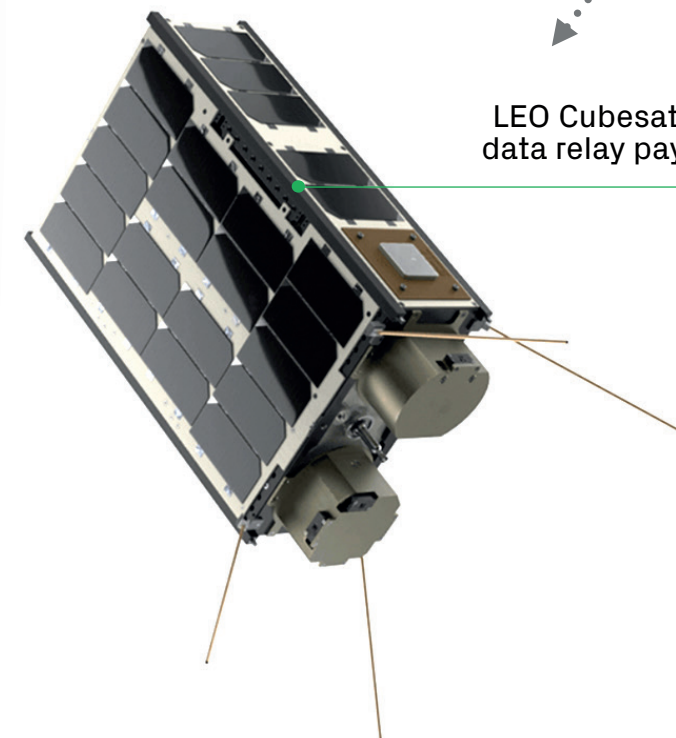


Data Relay for LEO Cubesats via GEO satellites

- Low-SWaP space-qualified satcom data terminal for LEO nanosatellites and launch vehicles
- Enables rapid response, near-real-time communications – TT&C and data transfer
- Various antenna configurations to meet required data rates



L-band transceiver (1U)
for LEO Cubesat



LEO Cubesat with
data relay payload

